



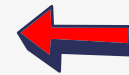
THE PEOPLE'S MAPS COMMISSION

Join the Commissioners for a virtual conversation with the following speakers, who will provide an overview of some of the tools used in developing legislative district maps.

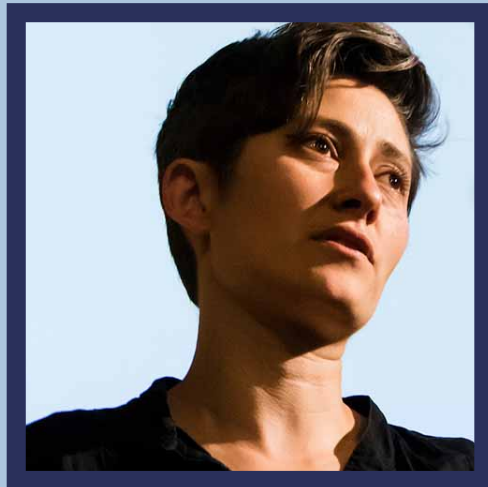
Public testimony will also be given.



Thursday, Nov. 17, 2020



5:30 – 8:30p.m.

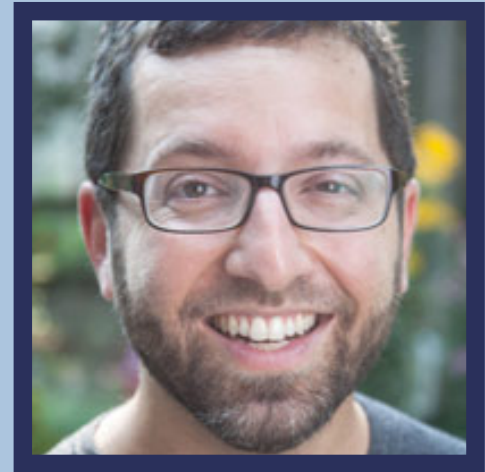


MOON DUCHIN

**Associate Professor
Tufts University**

Duchin leads Tufts University's Redistricting Lab within the Metric Geometry and Gerrymandering Group. A mathematician, her work in geometric group theory, low-dimensional topology, and dynamics focuses mathematical attention on issues of electoral redistricting.

In 2018, Pennsylvania Governor Tom Wolf enlisted Duchin to help him evaluate newly drawn district maps for fairness.



JORDAN ELLENBERG

**Professor
University of Wisconsin - Madison**

A math professor at UW-Madison, Ellenberg integrates math with the science of redistricting and gerrymandering. His research and presentations highlight how computational and political developments have made gerrymandering a significant problem; however he believes new developments in math may be the solution.

Ellenberg is also an affiliate of UW-Madison's Election Research Center.

Working together to create fair, impartial maps.

For more information about the Commission, streaming of hearings, or how to provide comment to the commission members, visit:
bit.ly/PeoplesMaps